

Mauritania

Malian Refugee & Host Communities' Livelihoods Project, Phase 2



BACKGROUND

Due to regional conflict and insecurity, with support from the U.S. Government, Lutheran World Relief (LWR) and Lutheran World Federation/Department for World Service (LWF/DWS) are now responding to the livelihood needs of both refugees and host communities in Mauritania. This work builds on PRM, LWR and LWF's initial project successes in constructing latrines and shelters in Mbera Refugee Camp.

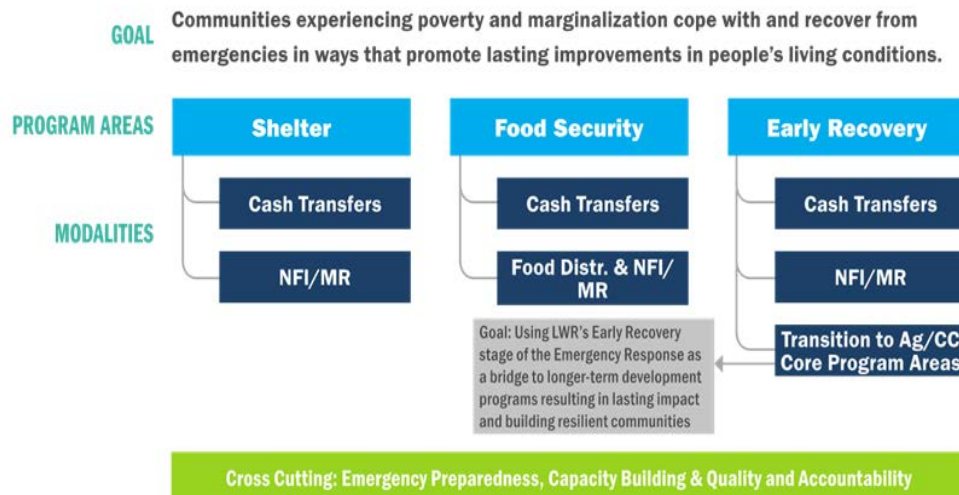
PROJECT PERIOD:

September 2015 – August 2016

FUNDING: \$650,000

ANTICIPATED RESULTS

- 9,400 people have enhanced sustainable livelihood capabilities
- 5,000 beneficiaries will receive gardening inputs such as seeds, tools and fencing, and 1,000 people will receive training on various improved horticulture methods and techniques through a farmer-to-farmer approach.
- 3,000 beneficiaries will receive livestock inputs
- 600 beneficiaries will receive training on animal husbandry techniques and skills and apply them
- 50% of project participants will report higher household income level by the end of the project
- Malian Refugee & Host Communities' Livelihoods Project supports the efforts of the United Nations High Commissioner for Refugee to enhance Malian refugees' self-reliance and promote a peaceful coexistence between refugees and the Mbera host communities through the provision of livelihoods support programming.
- Through **capacity building, training and mentorship**, the Malian Refugee & Host Communities' Livelihoods Project seeks to empower and equip refugees and host communities with the know-how and inputs necessary to encourage more productive livelihoods both now and in the future.



Lutheran World Relief
SUSTAINABLE DEVELOPMENT. LASTING PROMISE.



Lutheran World Relief
SUSTAINABLE DEVELOPMENT. LASTING PROMISE.

lwr.org