



Jonathan Ernst for LWR

## HAITI BY THE NUMBERS:

# A PARTNERSHIP OF RECOVERY AND PROGRESS

In response to the devastating earthquake on January 12, 2010, Lutheran World Relief received a tremendous response from its constituents. Prior to this disaster, LWR had been supporting small rural development projects in Haiti for 14 years. With the influx of funding following the earthquake, LWR developed a strategy of immediate response and rehabilitation that built on our existing local and international relationships and avoided duplication of other NGO efforts. These resources also allowed LWR to establish a physical presence and transition to a long-term program focused on economic development and climate change adaptation for Haiti's rural small farm enterprises. This fact sheet presents a snapshot of LWR's work in Haiti over the last six years: from the immediate response to the earthquake and subsequent emergencies to a focus on the long-term economic revitalization of Haitian agriculture and climate change adaptation.

## PROGRAM STRATEGIES

### EMERGENCY IMMEDIATE RESPONSE / EARLY RECOVERY

#### 2010 EARTHQUAKE:

LWR's immediate response through ACT Alliance network to families living in camps in and around Port-au-Prince in the earthquake's aftermath included:

#### Distribution of Emergency Supplies (Quilts & Kits)

- **25,645** hygiene kits
- **23,100** blankets
- **38,400** school kits
- **2,000** baby care kits
- **2,156** water containers and aquatabs (for water purification)
- **414** household water filters

#### Shelter

- **39** large tents
- Housing materials for **50** families

#### Food and water distribution

LWR also worked with local partners to support families living in rural villages who hosted relatives displaced by the earthquake, including:

- Seed distribution to **1,624** families Cash for Work for **8,151** rural IDPs or host families

#### 2010 CHOLERA OUTBREAK:

##### Cholera treatment / prevention

- **45,856** hygiene kits
- **150** school water filters
- Medical supplies- antibiotics, exam gloves, alcohol

#### 2010 HURRICANE TOMÁS EMERGENCY RESPONSE

- **1,200** hygiene kits, food parcels and tarps
- **25** houses rehabilitated

#### 2012 TROPICAL STORM ISAAC EMERGENCY RESPONSE

- **1,751** hygiene kits
- **300** family food parcels

#### 2012 TROPICAL STORM IVAN AND HURRICANE SANDY RESPONSES

- Food distribution, seed distribution, livestock distribution

#### 2015 HURRICANE SEASON PREPARATION

##### Prepositioned Emergency Relief Supplies

- **7,820** Hygiene kits
- **5,100** Baby care kits



Lutheran World Relief  
SUSTAINABLE DEVELOPMENT. LASTING PROMISE.

## RESTORATION AND REHABILITATION OF LIVELIHOODS

### MODEL VILLAGE

- Workforce and business skills training for resettlement community
- Credit and financial services for small enterprise startups

### ARTISANS' LIVELIHOODS

- **60** professional artisans increased sales by **32%**

### PRIMARY SCHOOLING SUPPORT TO CHILDREN

- **29,180** school supplies kits
- **20,720** hygiene kits
- **4,600** pounds soap

### RURAL FOOD SECURITY FOR COMMUNITIES RECEIVING DISPLACED FAMILIES

- **67%** Increase in household food production in beneficiary communities
- **~1,300** latrines constructed
- **637** farmer groups trained and capitalized to operate savings and credit scheme, seed banks and tool banks
- Training on nutrition and health topics for **~4,500** households
- **~4,000** farms implement soil and water conservation practices
- Installed post-harvest processing and storage infrastructure

### FOOD SECURITY FOR FAMILIES AFFECTED BY DROUGHT:

#### Improve food security for 665 women and 1735 men via:

- Increased production of food crops such as cassava, sorghum and pigeon peas
- Improved fishing volumes with environmentally sound fishing practices
- Increased access to basic foods for the most vulnerable in these communities through cash for work
- Increased income for women in processing agricultural products

## RURAL ECONOMIC DEVELOPMENT: AGRICULTURE & CLIMATE CHANGE ADAPTATION

### COCOA VALUE CHAIN (ONGOING PROJECT GOALS)

- **2,500** farmers improve productivity by **30%** in organic agroforestry systems
- Close gender gap in participation at all levels of value chain
- Farmers improve harvest and post-harvest practices for quality control
- **6** cooperatives improve governance and enterprise management practices
- Infrastructure for post-harvest drying and fermenting for all member production
- Association of cooperatives improves marketing, packaging & warehousing services
- Return **60%** to **70%** of world market price to producer
- Distribute harvesting tools to **2,470** producers to reduce farm labor costs

### COFFEE VALUE CHAIN / FARMER RESILIENCE (ONGOING PROJECT GOALS)

- Improve profits for over **5,000** farm enterprises, **39%** female headed
- Renovate total **2,800 ha.** of coffee plantation affected by roya (1,967 to date)
- Convert **238 ha.** of monoculture or install new diversified production system
- Establish **602 ha.** of new coffee plantations
- **8** cooperatives have improved and gender integrated governance
- Upgrade warehousing and processing infrastructure for cooperatives
- Install weather monitoring stations for evidence-based crop management
- Economic and technical support to non-coffee side businesses for **70** families to diversify household incomes

### CLIMATE CHANGE ADAPTATION

- **6,675** participants in agricultural adaptation experiments, of which **1,090** implemented adaptation techniques on farms
- **225** hours of broadcast educational programs on climate change (causes, consequences and agricultural adaptations) reach **400,000** listeners out of a total population of **11 million**

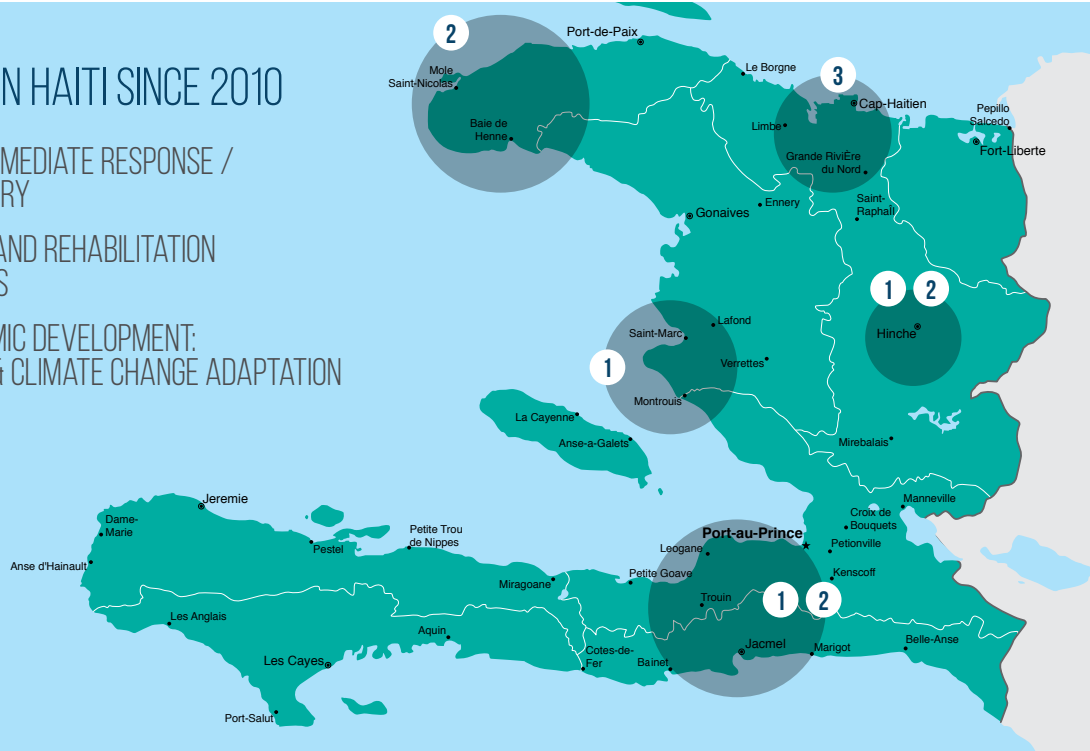


Allison Shelley for LWR

◀ Women sort coffee beans by hand at one of eight RECOCARNO coffee cooperatives. LWR partners with RECOCARNO to improve its members' production and post-production processing of coffee.

## LWR'S WORK IN HAITI SINCE 2010

- 1 EMERGENCY IMMEDIATE RESPONSE / EARLY RECOVERY
- 2 RESTORATION AND REHABILITATION OF LIVELIHOODS
- 3 RURAL ECONOMIC DEVELOPMENT: AGRICULTURE & CLIMATE CHANGE ADAPTATION



## PARTNERS

LWR could not have accomplished this work without generous support from donors and collaboration with local and international partners. Among those who have supported and collaborated with LWR are:

### INTERNATIONAL PARTNERS:

- Action by Churches Together (ACT) Alliance
- Catholic Relief Services
- Christian Aid
- Groundswell International
- IMA World Health
- Lutheran World Federation
- Norwegian Church Aid
- World Neighbors

### LOCAL PARTNERS:

- Asnanm Pou Yon Demen Miyo an Ayiti (ADEMA)
- Fédération des Coopérative de Cacao du Nord (FECCANO)
- Fédération des Artisans Haïtiens (FDAH)
- Partenariat de Développement Local (PDL)
- Réseau des Coopératives Cafésières de la Région Nord (RECOCARNO)
- Service Chrétien

### DONORS:

- Thousands of Lutherans and other individual donors across the United States
- Anne E Casey Foundation
- Carnegie Corporation
- Evangelical Lutheran Church in America (ELCA)
- Inter-American Development Bank
- The Lutheran Church—Missouri Synod (LCMS)
- Lutheran Foundation
- Nebraska Lutheran Outdoor Ministries (NLOM)
- Thrivent Financial
- Walgreens

Founded in 1945, Lutheran World Relief (LWR) is a US-based 501(c)3 organization with a mission to end poverty, injustice and human suffering by improving rural livelihoods. LWR expenses approximately \$50 million annually and operates rural agriculture, climate change and emergency response programs in Africa, Asia and Latin America, reaching more than 4 million beneficiaries worldwide in 2015. LWR has worked with small-holder farmers for more than four decades in Latin America, collaborating with a diverse set of partners including farmers' organizations, research institutions, development agencies and private sector entities. LWR also works globally to build linkages between trans-national commodity supply chains and the local small farm enterprises who are LWR's target population.

To donate to Haiti, please visit  
[lwr.org/donate](http://lwr.org/donate) or call **+1.800.597.5972**

For additional information please contact  
 Carolyn Barker-Villena, Senior Director, Latin America  
[cbarker@lwr.org](mailto:cbarker@lwr.org) or call **+1.410.230.2722**



**Lutheran World Relief**  
 SUSTAINABLE DEVELOPMENT. LASTING PROMISE.

[lwr.org](http://lwr.org)