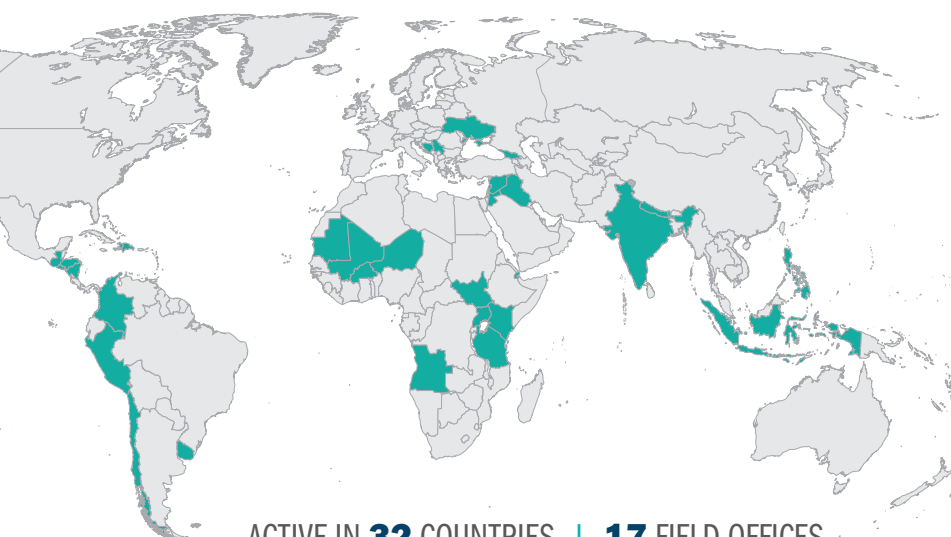


LWR^{BY THE} NUMBERS

2017

WHERE WE WORK



ACTIVE IN **32** COUNTRIES | **17** FIELD OFFICES

AFRICA

 BURKINA FASO[†]
KENYA[†]
MALI[†]
 MAURITANIA
NIGER[†]
 SOUTH SUDAN
 TANZANIA[†]
UGANDA^{†*}

ASIA & MIDDLE EAST

 INDIA[†]
INDONESIA[†]
 IRAQ
 LEBANON[†]
NEPAL[†]
PHILIPPINES[†]
SYRIA^{*}

LATIN AMERICA

CHILE
COLOMBIA[†]
DOMINICAN REPUBLIC
 EL SALVADOR[†]
 GUATEMALA
 HAITI^{†*}
 HONDURAS[†]
 NICARAGUA[†]
 PERU[†]
URUGUAY

MATERIAL RESOURCE DISTRIBUTION

ANGOLA
DJIBOUTI
GEORGIA
JORDAN
BOSNIA-HERZEGOVINA
SERBIA
UKRAINE

[†]Countries with LWR Field Offices

^{*}ACT Appeal response in addition to program work

 Material Resource distribution in addition to program work

WITH NEARLY 75 YEARS of demonstrated expertise helping to transform some of the hardest-to-reach places in the developing world, Lutheran World Relief (LWR) is an innovative, trusted international nongovernmental organization (INGO) committed to those otherwise cut off from basic human services and opportunities.

LWR helps communities living in extreme poverty adapt to the challenges that threaten their livelihoods and responds to emergencies with a long-term view. Regardless of whether these challenges are chronic or acute, LWR invests in communities to enable those living in extreme poverty to build the resilience they need to thrive.

Our international team of experts develops the most effective tools to help people achieve self-sufficiency. Our long history of partnership with local communities, businesses and governments enables in-country professionals to lift up local knowledge and leverage relationships that drive results.

LWR by the Numbers is a collection of organizational data that provides a snapshot of our work worldwide in 2017.^{††}

The data are organized into several groups:

- People who directly participated in LWR programs
- People who indirectly benefited from LWR programs
- The number of LWR projects and project participants, according to LWR's programmatic international strategic objectives[†] and separated by LWR's three key regions of work: Africa, Asia and Latin America
- The number of local partners by region
- The amount of LWR funds spent on international programs according to region and strategic objective

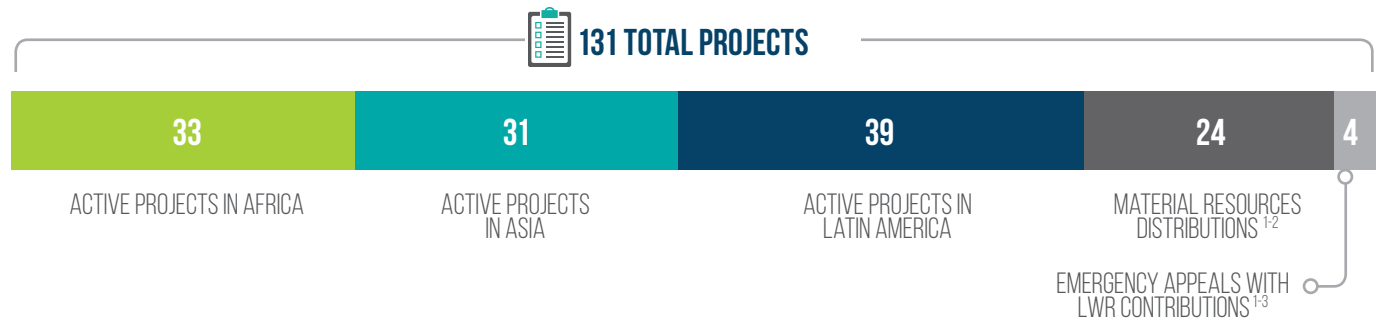
LWR by the Numbers provides information about the scale and breakdown of our work. To dig deeper into ways that our work has changed the lives of project participants, we are using project and program evaluation tools that can confirm positive impact from our programs, and can also verify that the impact is indeed lasting over time. Better data collection, information management and regular strategic analysis allow LWR to learn, plan, grow and improve our accountability to project participants and our wider public of stakeholders. Learn more about our robust evaluation tools at lwr.org.



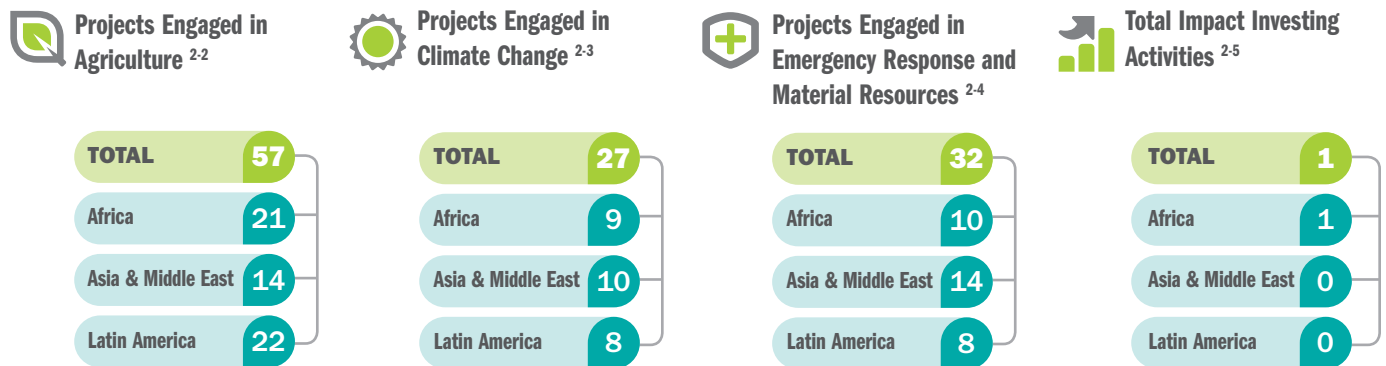
Lutheran World Relief
SUSTAINABLE DEVELOPMENT. LASTING PROMISE.

^{††} Data contained in this report are from LWR's fiscal year 2017, which runs October 2016 through September 2017, and refer to LWR's work in the 32 countries where LWR supports projects or Material Resource distributions.

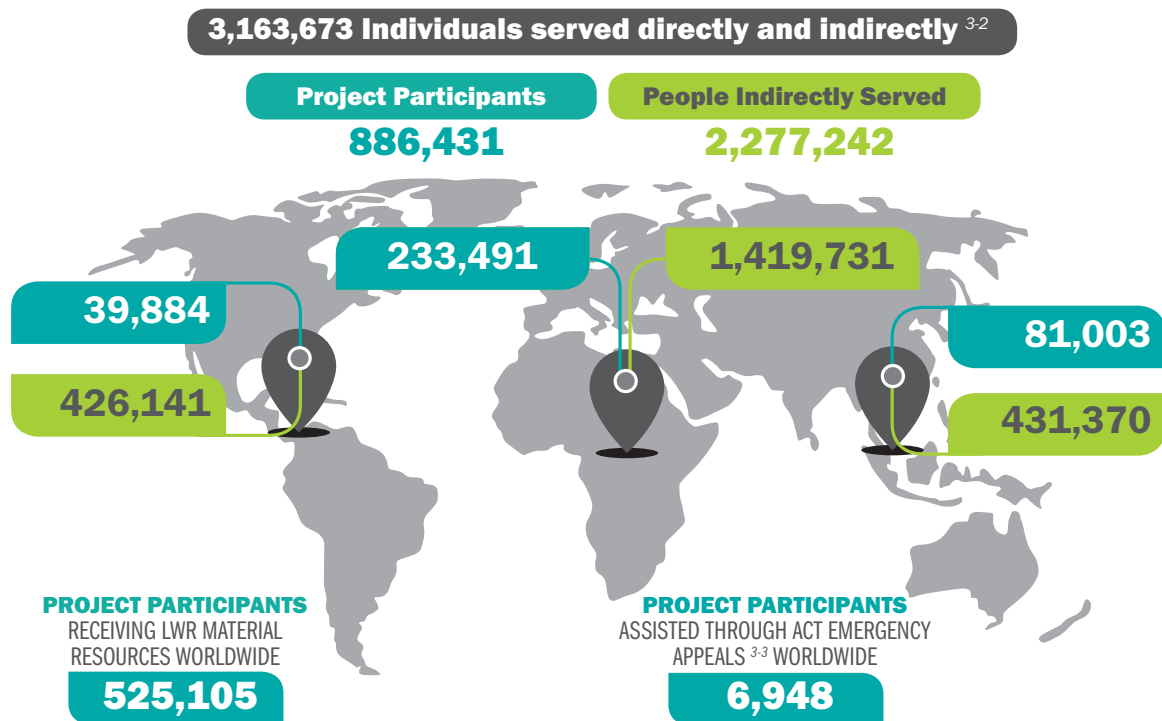
1 LWR PROJECTS ACTIVE IN FISCAL YEAR (FY) 2017 ¹⁻¹



2 LWR PROJECTS ACCORDING TO INTERNATIONAL OBJECTIVE ²⁻¹



3 TOTAL NUMBER OF PEOPLE SERVED BY LWR PROJECTS IN FY2017 ³⁻¹



4 PARTNERS IMPLEMENTING LWR PROJECTS IN FY2017 ⁴⁻¹



5 FARMERS ENGAGED IN AGRICULTURE ACTIVITIES IN FY2017 ⁵⁻¹

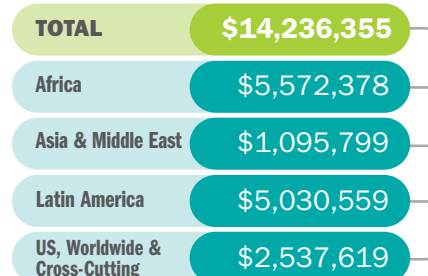


6 PROGRAM EXPENSES IN FY2017 ⁶⁻¹

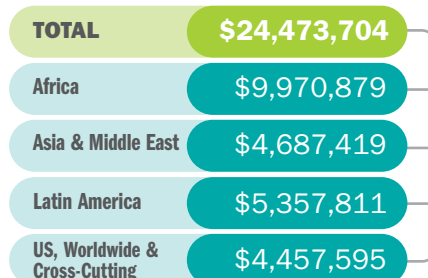


7 INTERNATIONAL PROGRAM EXPENSES BY OBJECTIVE ⁷⁻¹

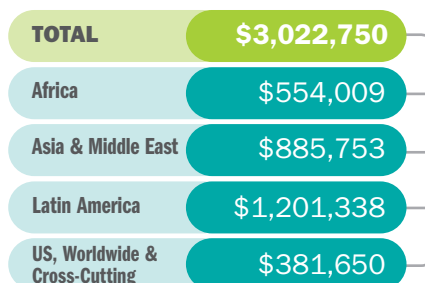
Money Spent on Agricultural Projects



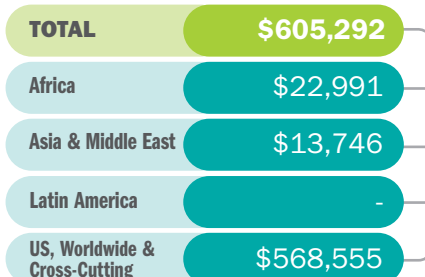
Money Spent on Emergency Response and Material Resources ⁷⁻²



Money Spent on Climate Change Projects



Money Spent on Impact Investing



ENDNOTES

1: LWR's International Objectives:

AGRICULTURE: Improve small-scale producer livelihoods by scaling up agricultural value chain and food security initiatives.

EMERGENCIES AND MATERIAL RESOURCES: Reduce the impact of emergencies by pre-positioning and mobilizing human, monetary, and material resources.

CLIMATE CHANGE: Build the capacity of communities to adapt to and mitigate the effects of climate change.

IMPACT INVESTING: Make strategic investments that drive rural economies. Our investments are equity positions in which LWR actively manages the enterprise with local partners.

- 1-1:** The term projects is meant to encompass both development and emergency response projects, Material Resource (or Quilts and Kits) distributions, and emergency appeals that were designed and implemented by other organizations without LWR's programmatic input, but to which LWR provided some financial support. FY2017 = Oct. 1, 2016 - Sept. 30, 2017. Includes all projects active during the period regardless of the duration of activity during that period. Projects could be active from one day to one year within the fiscal year.
- 1-2:** Material Resource distributions worldwide, including countries where LWR does not have an office or support development projects. This includes LWR's Quilt & Kit Ministry.
- 1-3:** "Emergency appeals" refers to situations in which LWR contributes funding to emergency responses, but does not implement any of the funded emergency response activities. Examples include responses through the global alliance Action by Churches Together (ACT). Data about emergency responses undertaken directly by LWR are included in the regional project data figures above.
- 2-1:** Many projects include activities in multiple sectors; therefore, the total number of projects according to sector is greater than the total number of projects overall. "Engaged" means that the project had at least one component related to that sector.
- 2-2:** Examples of agriculture projects include, but are not limited to, technical assistance for farmers, access to farm inputs and credit, and crop diversification.
- 2-3:** Examples of climate change projects include, but are not limited to, disaster risk reduction and coastal resilience, watershed management, and helping rural communities adapt to changing weather patterns.
- 2-4:** Examples of emergency relief projects include, but are not limited to, Quilt and Kit distributions, cash-for-work, food distributions, and direct cash transfers.
- 2-5:** LWR's impact investing project is Mountain Harvest, a buyer and trader of premium coffee from Uganda, which is wholly-owned by LWR's Ground Up Investing LLC.
- 3-1:** Total number of people served by LWR projects means the number of people participating in the project for the whole duration of the project (often several years) or at any point in the project. The vast majority of LWR's project participants work with us from the start of the project, and support to the same target group of people will continue holistically through the end of the project.
- 3-2:** Project participants benefit directly from project activities whereas people indirectly served are not involved directly in project activities but can still receive secondary benefits from those activities. LWR partners and local staff determine this count on a per-project basis to reflect each project's specific nature and context. For example, some agriculture projects may be working directly with one farmer per family, and would count that farmer as a project participant, with his/her family indirectly served. The nature of another type of agriculture project may be to provide support to a family farm, where most or all members of the family would be project participants, while neighbors or extended family who learn from them, could be counted as indirectly served.
- 3-3:** ACT is an alliance of 140 churches and related organizations that work together in humanitarian assistance, advocacy and development. In almost any emergency, one or more ACT members are already working in the community and are able to begin an immediate response. ACT coordinates fundraising for the response through Emergency Appeals to its member agencies, allowing alliance members to support disaster response through ACT partners.
- 4-1:** LWR defines "partners" as local organizations involved in implementing LWR program activities.
- 4-2:** Includes LWR partners in countries where LWR has an active presence with full projects and partners in countries where LWR does not have an active presence but assisted with Material Resource distributions.
- 5-1:** "Farmers" refers to any project participants who engaged in an LWR supported project with an agricultural component. This includes people who work in a range of activities involved with agriculture, including but not limited to, production, processing, or marketing.
- 6-1:** Program Expenses, by region, include costs incurred within each region and related program management costs.
- 6-2:** Includes costs of emergency responses in regions not covered by LWR regional offices and other worldwide program support not specific to a particular country.
- 6-3:** Includes program expenses for international program management and other cross-cutting program activities not linked to one region, such as gender integration, emergency response support, and monitoring, evaluation and learning.
- 7-1:** International Program Expenses by Objective includes direct costs by sector and region, plus related proportional cross-cutting program and management costs, for international programming.
- 7-2:** Total spent on emergencies and material resources includes \$13,219,486 cash value equivalent of donated material resources shipped.



Lutheran World Relief
SUSTAINABLE DEVELOPMENT. LASTING PROMISE.

lwr.org