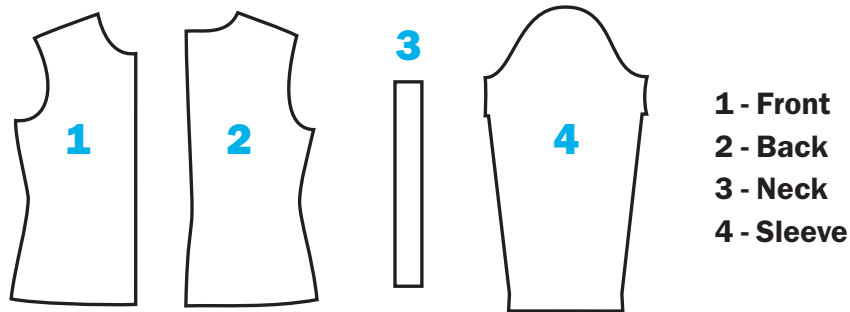
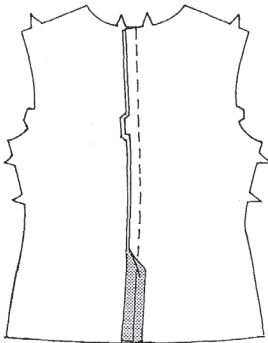


# Simple Baby Shirt Pattern

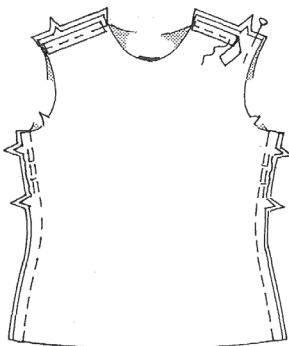
Size can be anywhere between 6 months to 24 months.



## Directions:



1. Stitch center back seam of back sections.



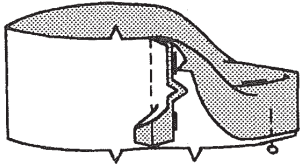
2. EASE-STITCH side edges of front between notches. Pin front to back at shoulder seams. To prevent shoulder seam from stretching, pin center of straight seam binding along seam line on front shoulder edge. Stitch. Pin front to back at side seams. Pull up ease stitches to fit. Baste. Stitch seams.



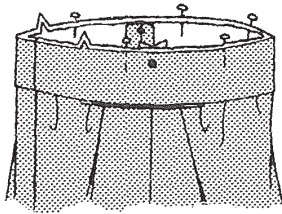
LUTHERAN WORLD RELIEF

# Simple Baby Shirt Pattern

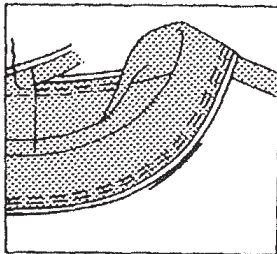
---



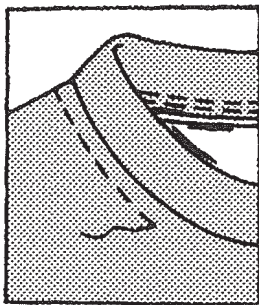
3. Stitch center back seam of neck band. Fold band in half, lengthwise, with WRONG sides together; press: Pin.



4, On OUTSIDE, pin band to neck edge, matching centers, placing small dots at shoulder seams and having raw edges even.



5. Stitch, stretching the band to fit. Stitch again 1/4" (6mm) away from first stitching within the seam allowance. Trim close to second stitching. Press seam toward garment, pressing band out.



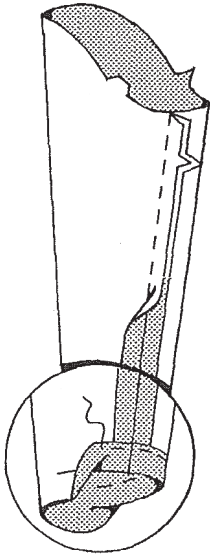
6. If you prefer, on OUTSIDE, straight or zig-zag stitch garment close to or 1/4" (6mm) from neck seam.



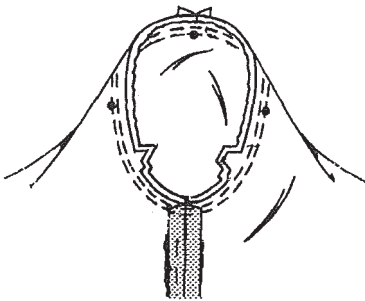
LUTHERAN WORLD RELIEF

# Simple Baby Shirt Pattern

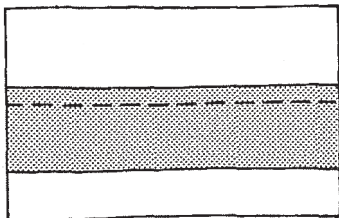
---



7. Stitch underarm seam of sleeve: Press up hem. Stitch OR zig-zag 1/4" (6mm) from raw edge.



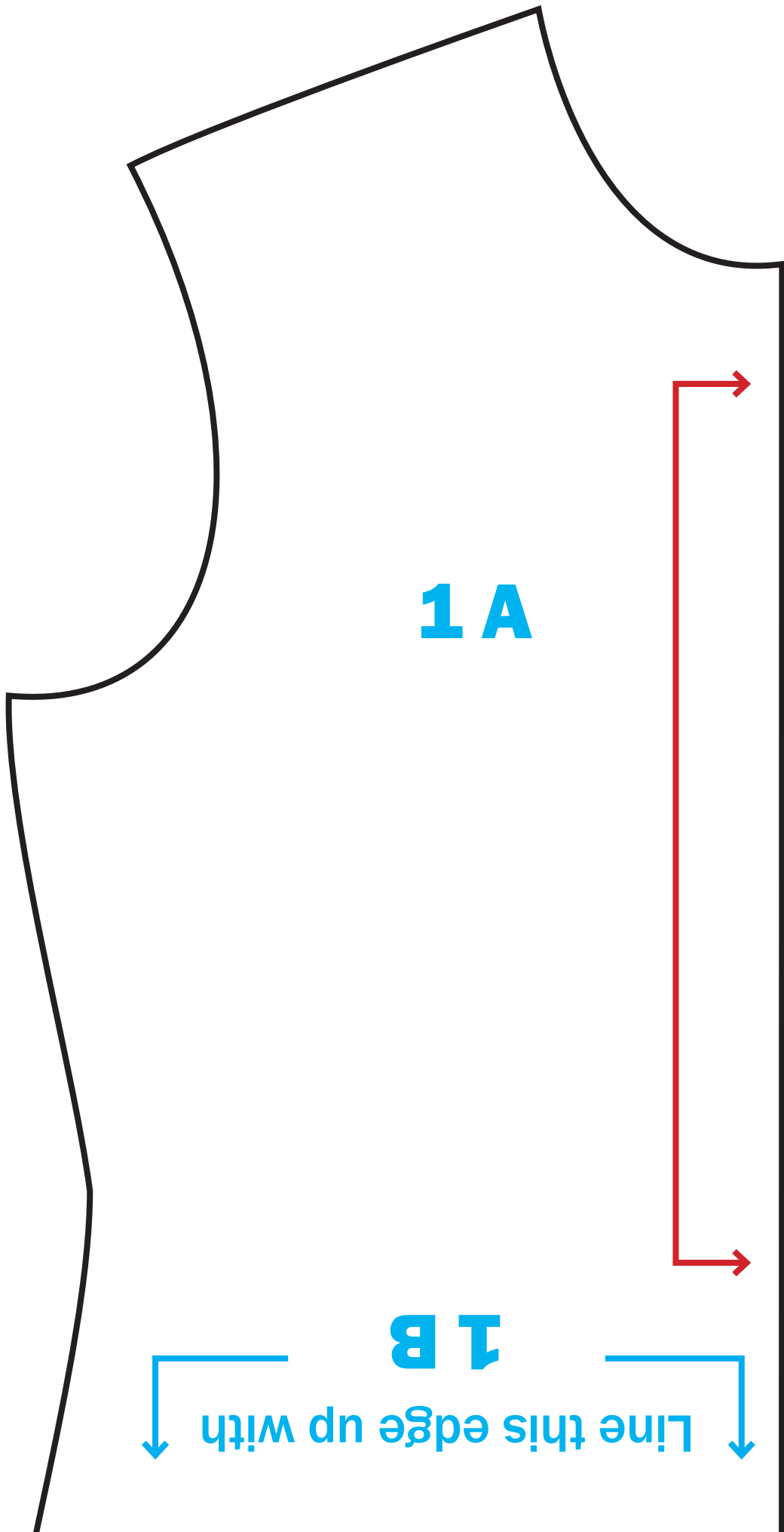
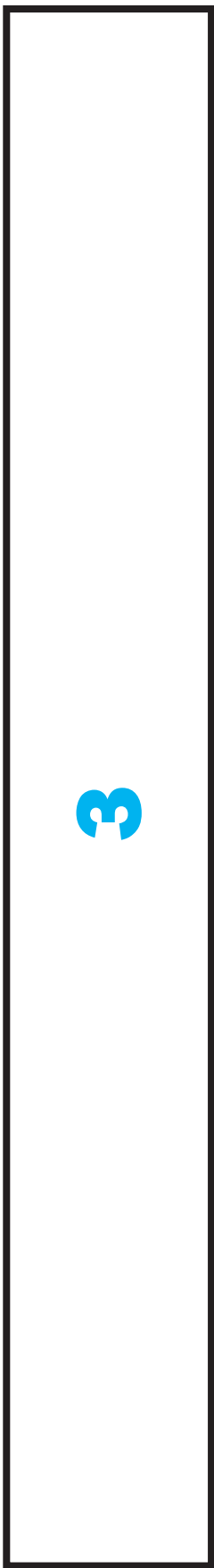
8. Turn sleeve RIGHT side out. Hold garment WRONG side out with armhole toward you. With RIGHT sides together, pin sleeve to armhole edge with center small dot at shoulder seam, matching underarm seams and remaining small dots. Baste. Stitch. Stitch again 1/8" (3mm) from first stitching. Trim seam below notches close to stitching. Press only the seam



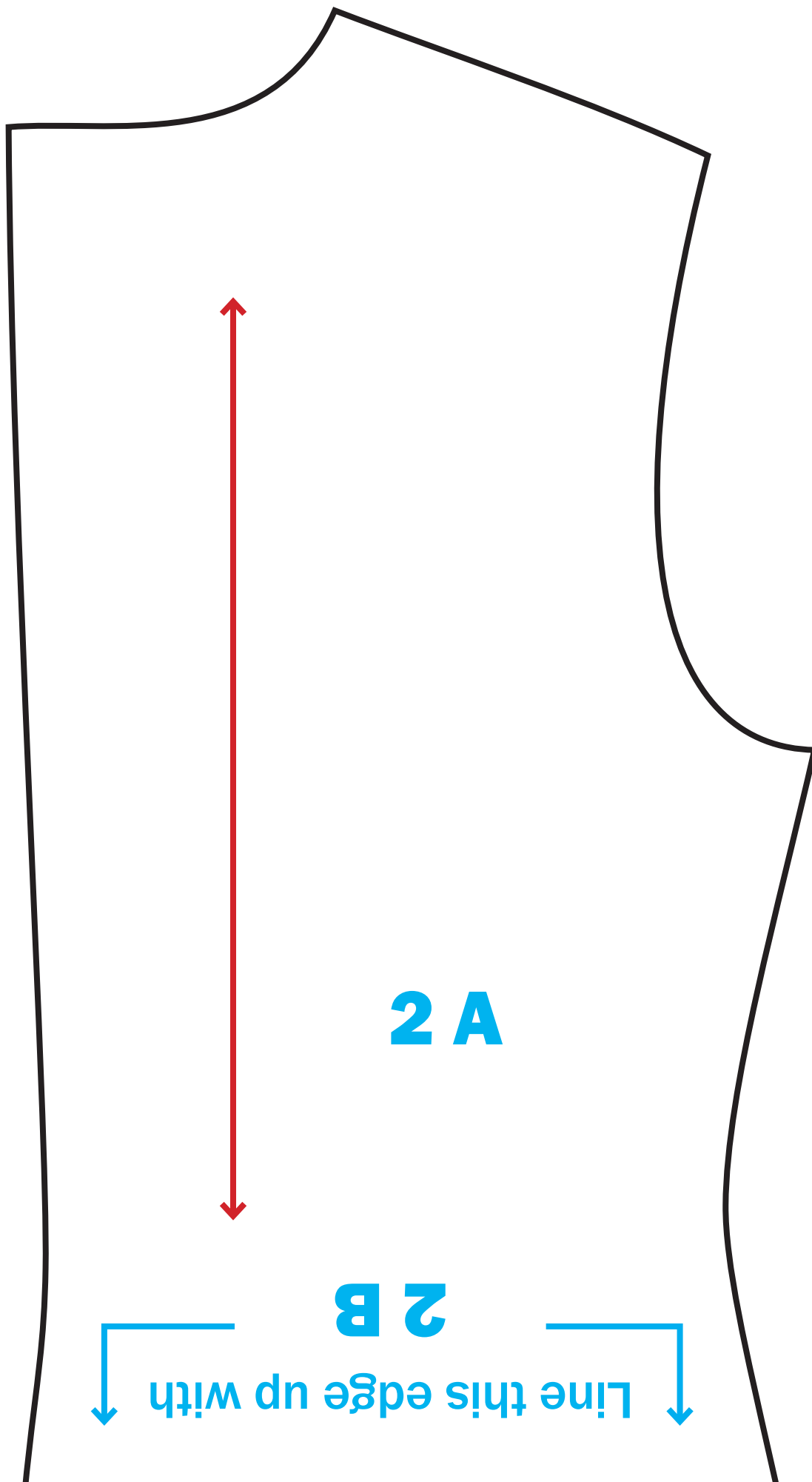
9. Press up hem. Stitch OR zig-zag 1



LUTHERAN WORLD RELIEF



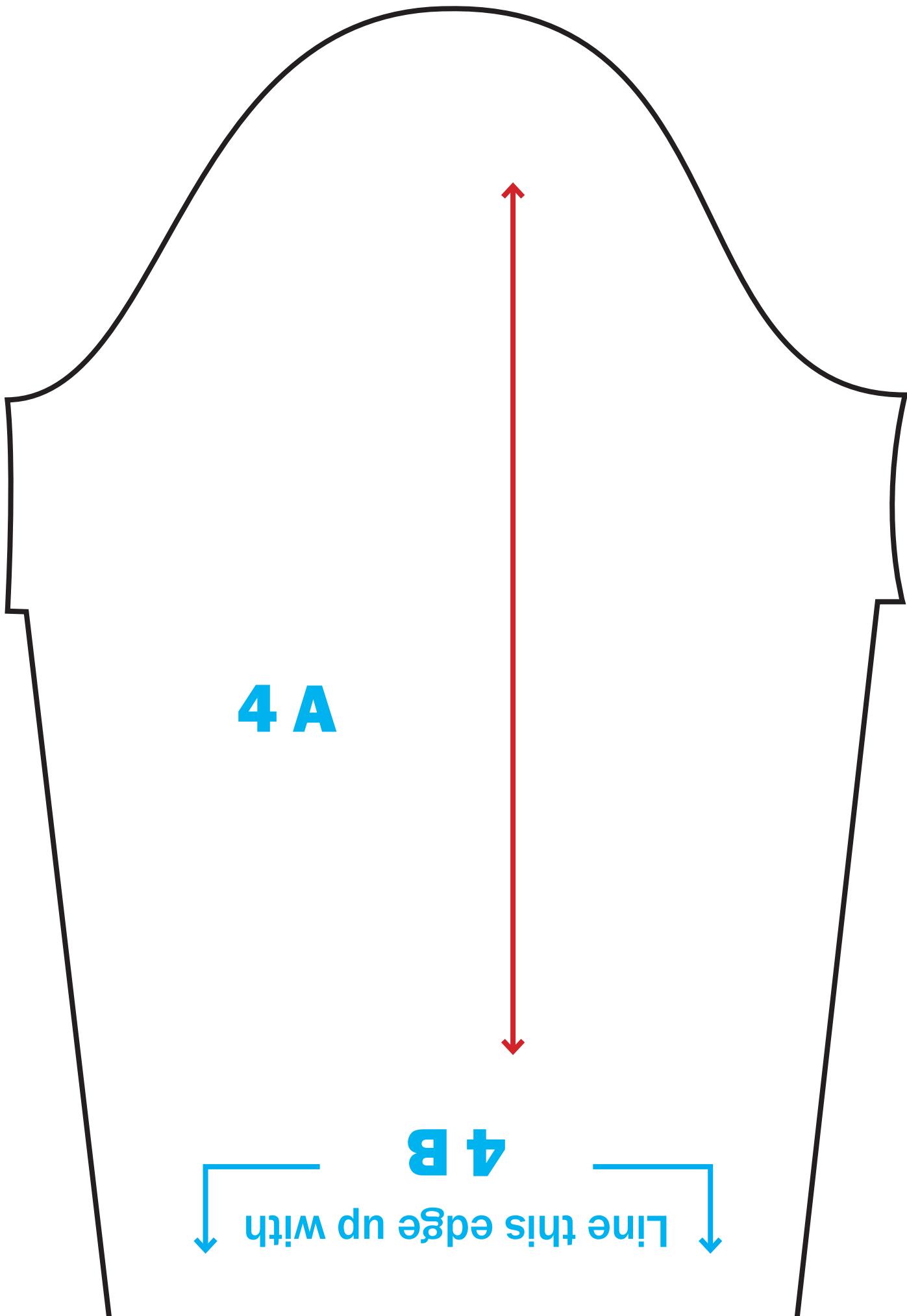
Line this edge up with  
1B



**2 A**

**2 B**

Line this edge up with



**4 A**

**4 B**

Line this edge up with

