

# Baby Jacket Pattern

Size 18 months

**Suggested fabrics:** Corduroy, denim, pre-quilted yard goods, washable wools, sweater knits, heavy t-shirt knits, thermal knits, sweatshirts

The pattern pieces are generous. There can be a 5/8" seam that allows for flat-felled seams or a 1/4" seam, serged or stitched with a zig-zag finish, will result in a slightly larger jacket.

If a lining is desired, it is easiest to make the lining the same size as the fashion fabric outer layer, sew them together around the entire perimeter except the neckline. Clip and turn, edge stitch the perimeter, then hem the sleeve over the lining and bind the neckline.

The neckline can be finished with a bias binding, t-shirt knit binding, or ribbing.

The finished jacket can be closed with buttons and button holes, snaps, ties, or velcro. This jacket pattern allows for an overlap at center front, so if adding ties, space them for the overlap.

## Directions:

1. Cut out the jacket, using the cutting lines indicated for the style of jacket you prefer. The back is cut on a fold.
2. Add interfacing if needed to support closures.
3. The notches may not match, but the larger notches indicate the back sleeve seam, the narrow notches the front. Sew the sleeve back seam to the back of the jacket.
4. Sew the front sleeve seam to the front of the jacket.
5. Sew the underarm seam
6. If using a lining, repeat the above steps with the lining pieces, then pin the lining to the fashion fabric and sew the entire perimeter except the neckline Turn right side out.
7. Finish the neckline with your desired finish, catching the facing in the neckline if you are using a facing.
8. Hem the bottom of the jacket
9. Hem the sleeve
10. Add the closures



LUTHERAN WORLD RELIEF

Line this edge up with  
**FRONT B**

Cut edge for  
bound edge

**FRONT  
A**

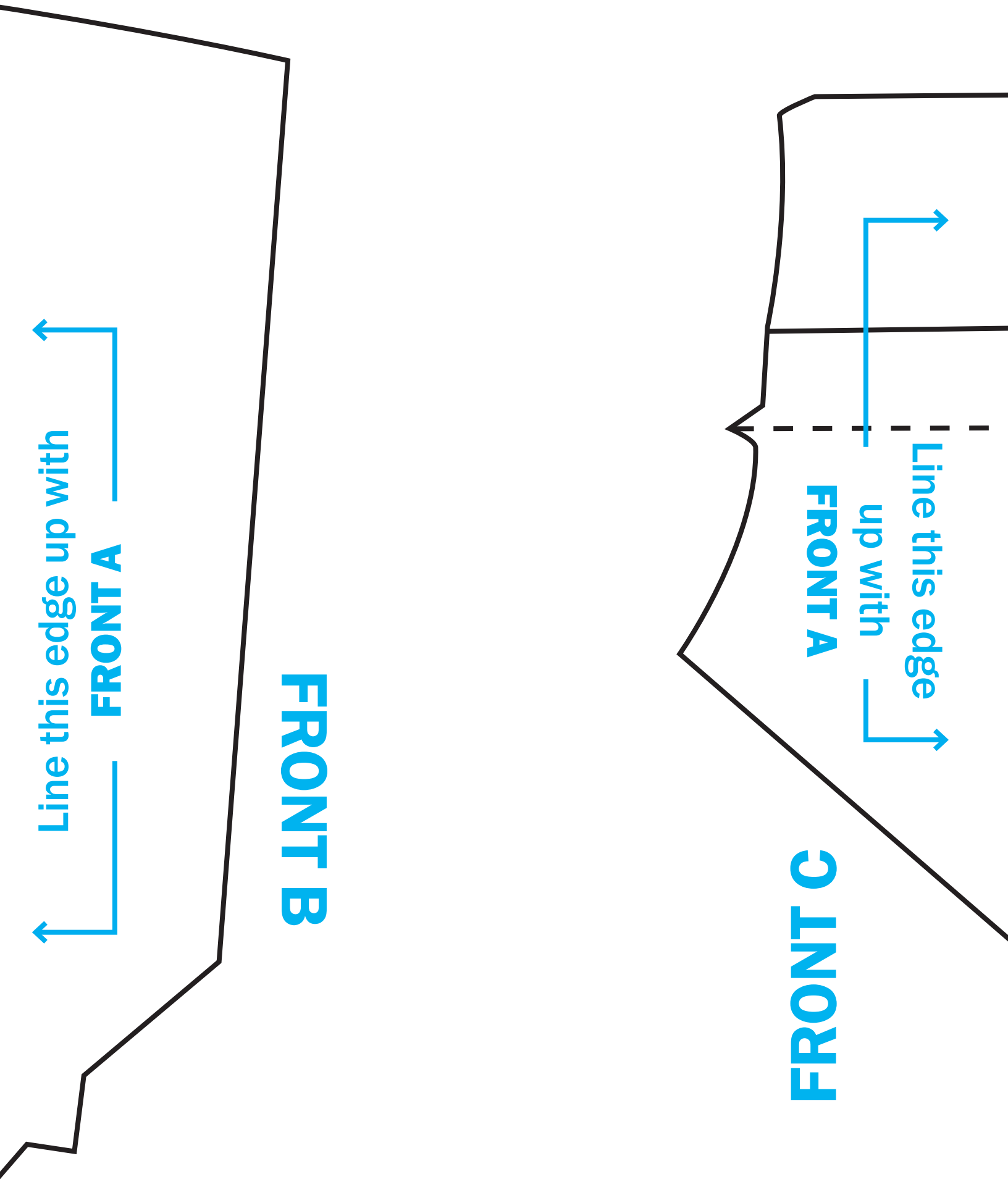
CF

Fold lone or cutting line for bound edge

Facing

cut here

Line this edge up with  
**FRONT C**



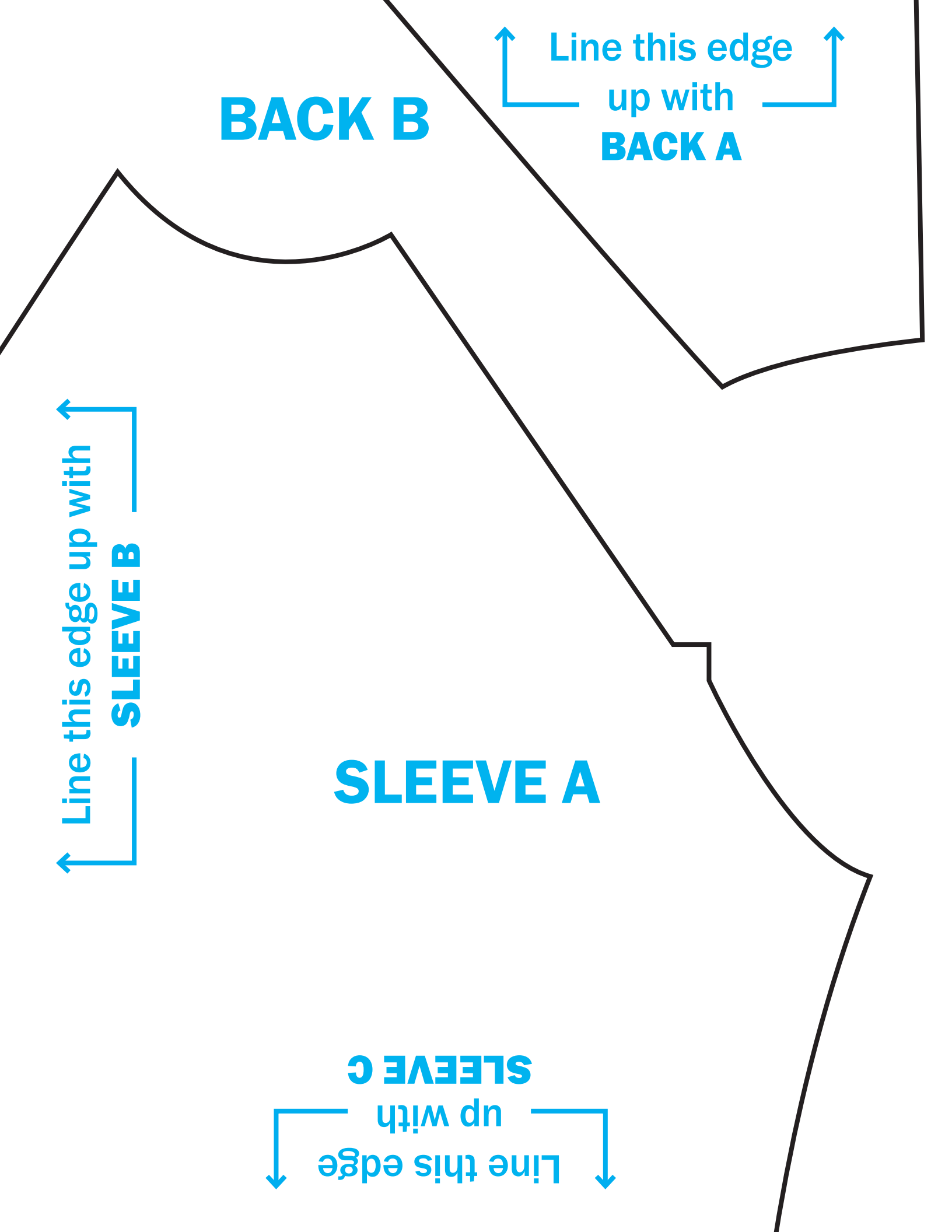
**BACK  
A**



**Place on Fold**



**Line this edge up with  
BACK B**



**BACK B**

Line this edge  
up with  
**BACK A**

Line this edge up with  
**SLEEVE B**

**SLEEVE A**

Line this edge  
up with  
**SLEEVE C**

Line this edge up with  
**SLEEVE A**

Line this edge  
up with  
**SLEEVE D**

**SLEEVE C**

1/2" hem allowed

**SLEEVE D**

**SLEEVE B**

Line this edge  
up with

Line this edge  
up with  
**SLEEVE C**

1/2" hem allowed

**SLEEVE B**

Line this edge up with  
**SLEEVE A**

Line this edge  
up with  
**SLEEVE D**