



**LUTHERAN
WORLD RELIEF**



QUILT & KIT MINISTRY GUIDE

2025



LUTHERAN WORLD RELIEF

Your Love Is Reaching Our Neighbors

The gifts you give are an immeasurable blessing to families around the world. A little girl is warmer because of a quilt sewn. A mother is happy because her children received school supplies and a bag to carry them. A father is learning a new skill that will provide income for his family because he's learning to sew using a Fabric Kit he received. A grandmother has regained her dignity because she was able to bathe using the soap inside a Personal Care Kit. And a baby is sleeping soundly because he is swaddled in a soft blanket from a Baby Care Kit.

Thank you for sharing your love with our neighbors in need and letting them know they are not alone.

We want your quilting and kit-making stories!

Your projects and pictures could be featured in one of LWR's publications!

Please include the name of your group/ congregation, mailing address, email address, phone number, contact person's name, the LWR projects you participate in, and comments. High-resolution photos are greatly appreciated!

Send your **information** to:
quiltsandkits@lwr.org or

Lutheran World Relief
Attn: LWR Quilt & Kit Ministry
700 Light Street
Baltimore, MD 21230 USA

For additional copies of this booklet, other materials or more information about LWR contact us at:
800 597 5972 | lwr@lwr.org
lwr.org/qkguide

LWR's Quilt & Kit Ministry is a great project for:

- Campus groups
- Confirmation students
- Co-workers
- Day camps
- Families
- Men's Groups
- Outdoor Ministry groups
- Retirees
- Student service groups
- Sunday school classes
- Vacation Bible School
- Women's groups
- Youth groups



TABLE OF CONTENTS

Assembly Instructions	1
Mission Quilts	2
School Kits	4
Personal Care Kits	6
Baby Care Kits	8
Fabric Kits	10
Packing and Shipping	13
Quilt & Kit Shipping Fund	15
Blessing Litany	17
Quilt & Kit Affinity Pin	18

Cover: Leyla Güleriyüz and her mother Seher lost everything in the Türkiye earthquake, but you brought them hope.

Left: Eva Douglass and Janet Smith tying quilts at Messiah Lutheran Church in Madison, Alabama.



General Assembly Instructions

LWR Quilts and Kits are highly regarded throughout the world because of their quality and consistency. Your careful adherence to the instructions in this guide will ensure that all LWR Quilts and Kits are:

USEFUL. We work closely with our overseas partners to determine the best contents to include in kits. Your kits will do the most good possible when they contain only the items listed in these guidelines.

CONSISTENT. Keeping quilt sizes and kit contents consistent helps our partners plan properly for distributing a shipment, and keeps international shipping processes cost-effective and efficient. Kits with missing or extra items must be disassembled and repacked at the warehouse, causing costly delays.

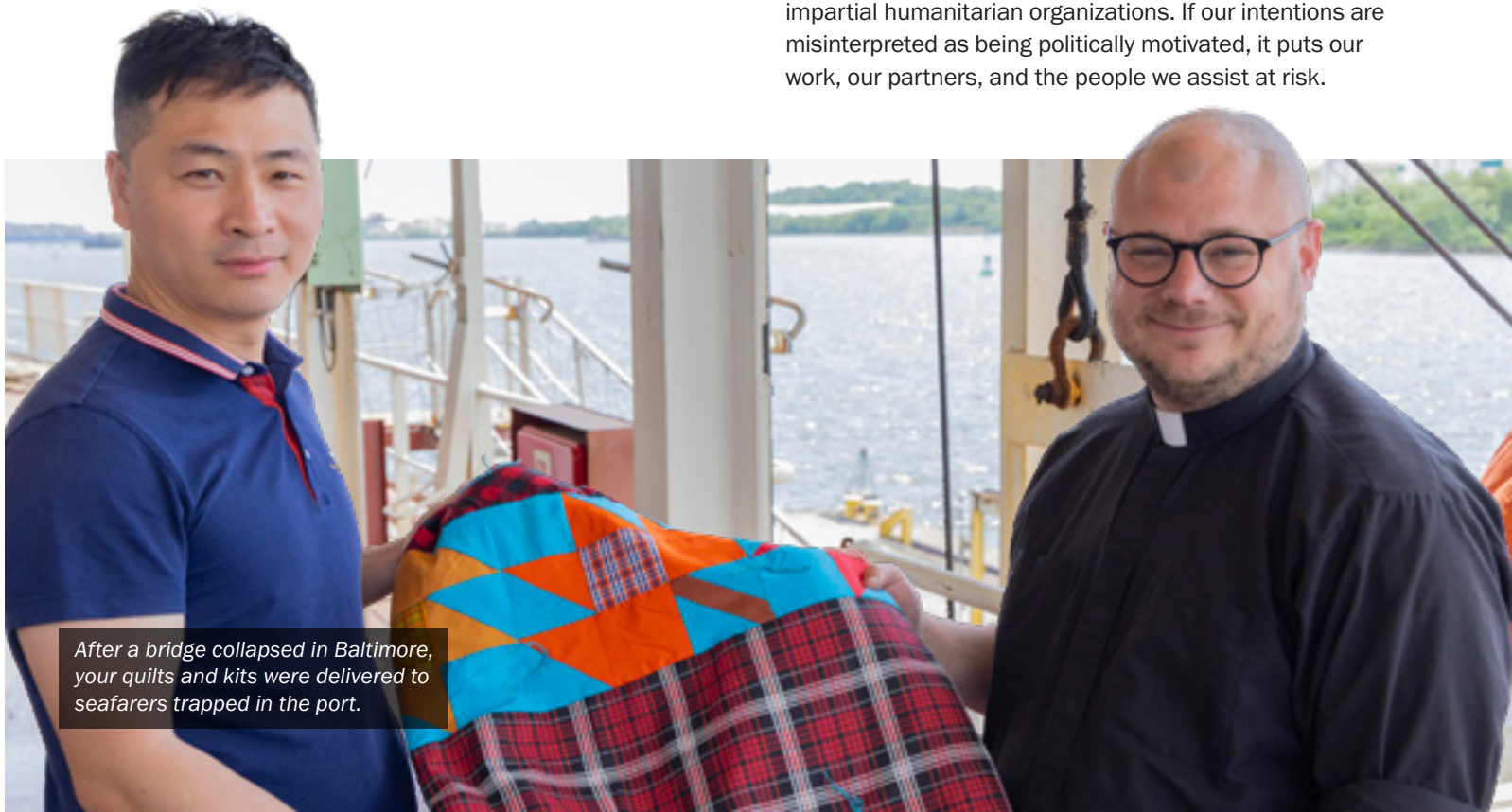
FAIR. When all kits contain the same items, recipients are treated equally and fairly, which is important for those who have already experienced a great deal of injustice or tragedy.



Be sure to visit lwr.org/quilts and lwr.org/kits for resources to make your quilting or kit-making project a success!

For quilts and all kits, please also follow these guidelines:

- **Please give new items only, except where otherwise noted.** Sending top quality items shows the greatest care and respect for the dignity of the recipient. Quality items also withstand the harsh conditions many recipients face.
- **Please donate only completed quilts and kits.** If you have extra components left after an assembly, consider keeping them to get a jump start on next year, or donate them locally to a shelter or school.
- **Please do not donate items with any religious holiday symbols, messages or your congregation's name.** LWR provides quilts, blankets and kits based on need, regardless of religion. Religious references may be misinterpreted by the governments of the receiving countries, jeopardizing the delivery to the people who need the items most. Secular symbols such as rabbits, eggs, and poinsettias are acceptable.
- **Please do not donate any items decorated with a U.S. flag, patriotic or military symbols, or references to the armed forces, including camouflage.** LWR and our overseas partners have access to areas of the world others do not because we are impartial humanitarian organizations. If our intentions are misinterpreted as being politically motivated, it puts our work, our partners, and the people we assist at risk.



After a bridge collapsed in Baltimore, your quilts and kits were delivered to seafarers trapped in the port.

Mission Quilts

Imagine the comfort and care you feel when you snuggle under a comforter or wear a piece of clothing made or worn by a loved one. That's the feeling you share through an LWR Quilt. In a simple combination of fabric and thread, you reach out to people in their time of greatest need with a strong message of hope — you are not alone.

First and foremost, recipients use their LWR Quilts to shield against the cold and rain, and for warm bedding. But their versatility also makes quilts useful as simple tents, floor coverings, or a wrap to hold a baby on a mother's back.

Please review the General Assembly instructions on Page 1 before beginning your quilting project.

How to Make an LWR Quilt in Three Easy Steps

- 1 Place a piece of fabric measuring 64" X 84" right side down on the table, followed by a filler measuring 60" X 80", and then another piece of fabric, also measuring 60" X 80", right side up on top of the filler.
- 2 Tie the layers together using crochet thread or embroidery floss, or machine-quilt them together.
- 3 Bring the edges of the 64" X 84" piece over the top, pin and machine-stitch the edge, using a zigzag stitch if possible.

LWR Quilts should measure 60" X 80". This size best serves adult recipients and children as they grow older. Please donate only 60" X 80" quilts. The machine that bales (tightly compresses) the quilts was specifically designed for quilts/blankets measuring 60" x 80", so please stay close to these dimensions.

The ultimate purpose of a quilt is to provide warmth, so please choose your fabrics and filler accordingly.

Even in warmer climates, temperatures can drop dramatically at night, requiring a quilt with sufficient filler. For tips on finding affordable filler for quilts, visit lwr.org/quilts and click on Get Quilt Filler Tips.

Please don't sew a church's name or a message into your quilt.

UPDATED SHIPPING NOTE:

LWR's approximate cost to handle and ship one quilt overseas is \$2.80. See Page 15 to learn how to support the LWR Quilt & Kit Shipping Fund.

Although LWR Mission Quilts are highly preferred due to their handmade quality and warmth, LWR also accepts new and like new (no stains or tears) store-bought blankets measuring approximately 60" X 80". Standard twin-size blankets are acceptable. Please do not donate electric blankets, fleece or afghans/throws. Pack blankets separately from Mission Quilts when shipping to LWR.

*"Comfort, O comfort my people, says your God."
Isaiah 40:1*



QUILTS KEEP KIDS HEALTHY

One-third of children in Tanzania are stunted due to chronic malnutrition. Stunting is more than being short; children who are stunted are more likely to get sick and may have developmental delays. In 2020, researchers discovered that children in Tanzania's chilly Njombe region were not only hungry — they were also cold. Instead of using every calorie to grow, they were burning energy to keep warm. Fortunately, your quilts are a colorful solution to the cold. Today, thanks to the work of your hands, nearly 9,000 children in Njombe have quilts to help them grow up healthy.

**Watch the video at
lwr.org/keepingwarm**



**Where did your quilts and kits go last year?
Visit lwr.org/qkmap to learn more.**



◀ The Christian Crafters include Evelyn Garret (front); Karen Corcoran, Becky Lin Feero, Carol Swanson, Miguel Cosmo, Karen Magerlein and Jeanette Gingold (middle row), and Lois Leonard (back).



Tips

- Quilt tops and bottoms can be made from whole pieces of fabric or any type of patchwork pattern of smaller squares. Sewn together using a suggested half-inch seam allowance to make a 60" X 80" top.
- Keep in mind that LWR Quilts will be washed frequently against rocks or hard surfaces and used for many purposes. We recommend washable fabrics such as cotton, cotton blends, twill, corduroy, polyester knits, and donated upholstery and drapery samples (please do not use fiberglass, fleece, or polar fleece). Please ensure that there are no stains or holes before using fabrics.
- Crochet thread or embroidery floss is preferred for tying, although durable yarn is acceptable. Ties spaced 6" to 10" apart and stitched through the material twice make for sturdy quilts.
- No religious holiday symbols or flags from any country on the quilts. If there is any doubt, please err on the side of caution and don't include it. We want to make sure the country officials who inspect the quilts have no concerns.
- Please check the quilt website page **lwr.org/quilts** for any updates/changes that may take place prior to the next issue of the Quilt & Kit Ministry Guide. Our goal is to provide a year's notice before any change goes into effect.

THE CHRISTIAN CRAFTERS at Our Savior Lutheran Church in Croton-on-Hudson, New York, is pieced together like a patchwork quilt. "We're like a little United Nations," says group leader Lois Leonard. Their eight members come from diverse backgrounds, including Norwegian, Chinese, Australian, English, German and Puerto Rican. They even have a male member to round out their group.

"Our common thread is the joy of making quilts and school kit bags for those in need around the world," Lois says. "What an awesome group!"

What's more, only four of them belong to Our Savior. They recruited the others through creative outreach in the community. Every year, the Christian Crafters host an event on National Quilting Day and invite volunteers from throughout the area to join the fun. Through this annual event, they have more than doubled their membership since the group launched seven years ago — expanding their circle as well as their impact for neighbors in need.

Today, the Christian Crafters is one of the most vibrant ministries at Our Savior, a small congregation that sees between 20-35 worshipers each Sunday. In Lois' words, the group is "a whole lot of laughs and oh, such diverse creativity." ■

STORAGE TIP: The Christian Crafters roll their finished quilts to keep them tidy until they are blessed and sent to the warehouse. "It reminds us of our childhood camping days when we would roll our sleeping bags," Lois says.



School Kits

Education is one of the strongest tools a community has for breaking the cycle of poverty. Ensuring that girls attend school, especially in places where their access is deprioritized, has even stronger results. School Kits contain essential supplies to help children – and in some cases, adults – continue learning in the face of serious obstacles. That learning leads to a better life for them, their families and their communities.

Please review the General Assembly instructions on Page 1 before collecting items for the School Kits.

*“But be doers of the word,
and not merely hearers who
deceive themselves.”*

James 1:22

Include the following items in each School Kit:

- ☐ Four 70-80 sheet **SPIRAL** notebooks (280-300 sheets total) of wide- or college-ruled paper approximately 8" X 10½"; no loose-leaf paper
- ☐ One 30-centimeter ruler, or a ruler with centimeters on one side and inches on the other (**NOTE: when packing, place the ruler inside the notebook to prevent sliding**)
- ☐ One pencil sharpener
- ☐ One pair of blunt scissors (safety scissors with embedded steel blades work well)
- ☐ Five **unsharpened** #2 pencils with erasers; secure together with a rubber band
- ☐ Five black or blue ballpoint pens (no gel ink); secure together with a rubber band
- ☐ One box of 16 or 24 crayons
- ☐ One 2½" eraser
- ☐ One sturdy drawstring backpack-style cloth bag approximately 14" X 17" with shoulder straps (no standard backpacks); preferred fabrics include sturdy cotton, canvas, denim, and twill

Do not add other items or leave out any of the items listed.

All items should be new and in good condition. Remove any excess packaging. Pack all items in bag and close. Do not enclose the kit or any of its contents in plastic bags.

Visit lwr.org/schoolkits or call **800.597.5972** for an easy-sew backpack-style bag pattern, tips for purchasing pre-made bags, and printable signs to help with your next assembly.

UPDATED SHIPPING NOTE:

LWR's approximate cost to handle and ship one School Kit overseas is \$2.85. See Page 15 to learn how to support the LWR Quilt & Kit Shipping Fund.



Visit lwr.org/kitvideos to watch a video with tips and tricks for assembling School Kits!



MINNESOTA RETIREE ASSEMBLES MORE THAN 100,000 LWR SCHOOL KITS

“Some retirees golf; some travel. Werner makes School Kits.” These were the words of Pastor Jay Dahlvang, Lead Pastor of Bethlehem Lutheran Church in Mankato, Minnesota, at a special event honoring church member **WERNER FICK**. Werner has assembled more than 100,000 School Kits for Lutheran World Relief.

“Education is really one of the most important tools that a community has to break the cycle of poverty,” Pastor Dahlvang continued. “In some parts of the world, a lack of school supplies can lead to a loss of education. Some kids will not go to school if they don’t have school supplies. When Werner heard this, he decided to do something himself.”

What started out as a small-scale service project some 13 years ago when Werner retired has grown into a major operation. He estimates he spends three to four hours a day, six days a week, on his School Kit ministry: bulk-buying supplies, assembling kits, recruiting helpers and making deliveries to the LWR warehouse in Minnesota. Werner purchases nearly all the supplies himself, taking advantage of back-to-school sales.



Werner is quick to turn the attention to the children around the world who benefit from his work. Standing next to a photo of a young girl from Central America who had received an LWR School Kit, Werner broke down in tears. “The girl in the picture is probably six or seven years old,” he said. “It might be the first time she gets a School Kit. And the picture on that poster inspires me every day.”

In addition to his labor of love assembling School Kits, Werner is also a generous donor to Lutheran World Relief and has identified LWR as a recipient in his will, ensuring his legacy of love will continue. ■

Leaving a share of your estate to Lutheran World Relief may be the most significant contribution that you can make to extend God’s love to our neighbors in need. Visit lwr.org/will to learn more and request a free guide to leaving a gift in your will.



School Kits in Tanzania

In 2022, you made sure all 161 students at Isede Primary School in Tanzania had School Kits. Teacher **MARIA TINDA** says this kindness has made a huge difference for students and teachers alike. Teachers used to dread telling the children to ask their parents to buy them supplies. In turn, students were often absent when they had nothing to bring. But since the kits were delivered, attendance has greatly improved. “It also blesses us and helps us do our job well,” she reflects. “I am grateful.”

Watch the video at

lwr.org/maria

Personal Care Kits

Cleanliness may not actually be next to godliness, but it certainly helps a person feel more human. When families find their homes destroyed, or must flee for their safety, soap and a towel rarely make the cut for what they can carry. Arriving in a refugee camp or other place of safety, they are scared, vulnerable and dirty from the travel. The simple items included in a Personal Care Kit provide much-needed self-care, critical germ fighting, and the chance to regain dignity amidst situations of fear and uncertainty.

Please review the General Assembly instructions on page 1 before collecting items for Personal Care Kits.

Include the following items in each Personal Care Kit:

- ☐ One lightweight cotton or cotton blend bath-size towel (20" x 40" to 27" x 52"), dark color recommended
- ☐ Two or three bath-size bars of soap equaling 8 to 9 oz, any brand, in original wrapping; no mini or hotel size bars
- ☐ One adult-size toothbrush in its original packaging*
- ☐ One sturdy comb. There are many different types of hair texture, so no picks or fine-toothed combs; remove packaging
- ☐ One metal nail clippers (attached file optional), remove packaging

*Toothbrush multi-packs may be used by sealing an individual toothbrush in a business-size envelope; no plastic bags or wrap.

Do not add other items or leave out any of the items listed.

All items should be new and in good condition. Wrap all the items in the towel and secure with ribbon or yarn. Do not enclose the kit or any of its contents in plastic bags.

UPDATED SHIPPING NOTE:

LWR's approximate cost to handle and ship one Personal Care Kit overseas is \$1.50 (no longer adding a tube of toothpaste). See Page 15 to learn how to support the LWR Quilt & Kit Shipping Fund.

"We always give thanks to God for all of you and mention you in our prayers, constantly remembering before our God and Father your work of faith and labor of love and steadfastness of hope in our Lord Jesus Christ."

1 Thessalonians 1: 2-3

WANT TO GET THE MOST BANG FOR YOUR BUCK?

Buy in Bulk!

Purchasing kit items in bulk saves time and money. Here are some tips to get started:

ONLINE: Many websites carry items appropriate for LWR kits and often have sales. Inspect items carefully to make sure they meet LWR guidelines and are of good quality.

CLUB STORES: Does anyone in your congregation have a membership to Costco, Sam's Club or BJ's? You can get bulk prices for kit items from these stores.

ASK: Some local stores may be willing to place a bulk order for you and even cut you a discount if they know that you'll be using the supplies to help people in need. It never hurts to ask!

Visit lwr.org/buyinbulk for a list of resources to help you buy supplies in bulk.



Visit lwr.org/kitvideos to watch a video with tips and tricks for assembling Personal Care Kits!





The late Cal and Hope Kappes (right) established an endowed fund to ensure St. Matthew's Lutheran Church (pictured above) could continue making Personal Care Kits long into the future.



ST. MATTHEW'S LUTHERAN CHURCH in Grand Rapids, Michigan, made 4,000 Personal Care Kits last year — an incredible outpouring of love for their neighbors around the world. Although Jeff Martin, Michael Martin and Donald Porter help to lead this effort, they are quick to point out that they picked up the torch from others who came before them. Calvin (Cal) and Hope Kappes were the church's original champions of Lutheran World Relief.

"They just loved helping others who are less fortunate," Jeff says. "Lutheran World Relief was their favorite charity."

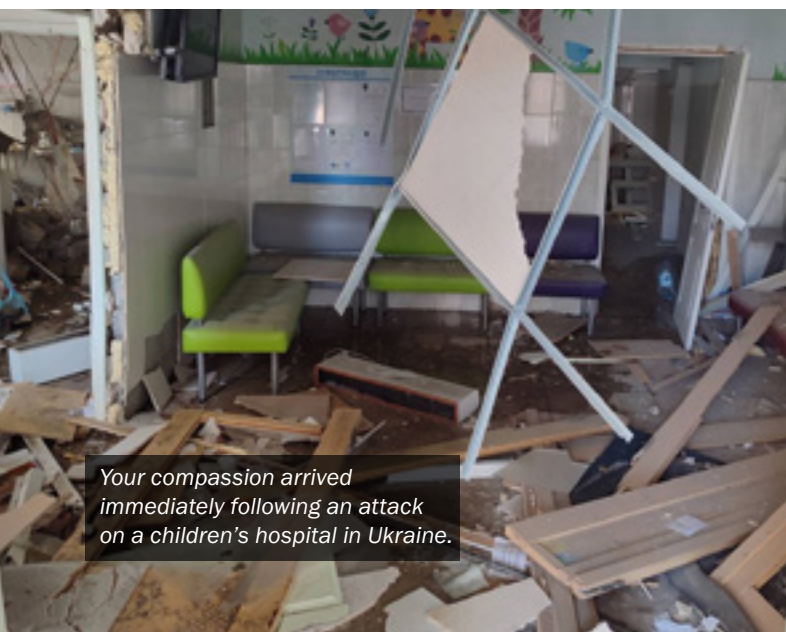
Many years ago, Cal and Hope began collecting supplies for Personal Care Kits and storing them in their basement. Then the project took over their garage, too.

Today, the whole church is involved. One church member, a dentist, donates all the toothbrushes. Various groups — from

the children and youth to adult Sunday School classes — take turns to assemble the kits over several weeks.

"It's a big project each year, but one that everyone looks forward to," Jeff reflects. "The fellowship is great. Everyone helps, from the youngest to the oldest."

Sadly, the Kappeses are no longer there to participate; Hope passed away in 2014 at the age of 88, and Cal followed her in April 2023 at age 99. But they remain a big part of the ministry. To keep the love going, the couple established an endowed fund to ensure there would always be money set aside at St. Matthew's to purchase kit supplies. This enables the congregation to purchase most items in bulk to maximize efficiency so they can spread even more love around the world! ■



Your compassion arrived immediately following an attack on a children's hospital in Ukraine.

Comfort in Crisis

Lutheran World Relief staff, who have carried your love throughout Ukraine since the war began in early 2022, were working just a few blocks away when a children's hospital was attacked. They sheltered in underground subway tunnels until the moment the missiles stopped falling. Then, your love took action.

As soon as the coast was clear, our staff rushed to the site to assist and distribute LWR Mission Quilts and Personal Care Kits to families evacuated from the hospital and nearby buildings. **In times of crisis, your compassion is there.** ■

Baby Care Kits

Bringing a baby into the world can be a difficult and scary thing for a mother living in poverty. Keeping a new baby healthy, clean, and comfortable can take a lot of resources. The items included in a Baby Care Kit provide the basics a family needs to care for their new members the way they hope to. Worry will always be present for all parents, but having some essentials allows them to enjoy and get to know their little ones and introduce them with pride to the world.

Please review the General Assembly instructions on Page 1 before collecting items for the Baby Care Kits.

Include the following items in each Baby Care Kit:

- ☐ Two lightweight cotton T-shirts (no Onesies®)
- ☐ Two long- or short-sleeved gowns or sleepers (without feet)
- ☐ Two receiving blankets, medium-weight cotton or flannel, or crocheted or knitted with lightweight yarn, minimum 36" to maximum 52", square or rectangular (Can mix and match)
- ☐ Four cloth diapers, flat fold preferred
- ☐ One jacket, sweater or sweatshirt with a hood, or include a baby cap
- ☐ Two pairs of socks
- ☐ One cotton or cotton blend hand towel, dark color recommended, sized 15" to 18" x 25" to 30"
- ☐ Two or three bath-size bars of gentle soap equaling 8 to 9 oz, any brand, in original wrapping; no mini or hotel size bars
- ☐ Two diaper pins or large safety pins

Do not add other items or leave out any of the items listed. Gently used, clean items (no stains or tears) can be substituted for new ones. Wrap items in one of the receiving blankets and secure with diaper pins or large safety pins. Do not enclose the kit or any of its contents in plastic bags. No fleece, polar fleece or microfiber.

Sizes 6 to 24 months may be used. Varying the sizes of the clothing items included will make the Baby Care Kit useful as the baby grows.

UPDATED SHIPPING NOTE:

LWR's approximate cost to handle and ship one Baby Care Kit overseas is \$3.10. See Page 15 to learn how to support the LWR Quilt & Kit Shipping Fund.



Visit lwr.org/kitvideos to watch a video with tips and tricks for assembling Baby Care Kits!



Baby Care Kits reach Ukraine

NADIA AGARKOVA fled her hometown in Ukraine during the early days of the war. She and her baby, a boy named Kyrylo, were fortunate to find safe refuge at a sanatorium on the opposite side of the country. But, because they fled quickly amid extreme violence, Nadia was not able to bring many supplies with her. She came to the LWR Quilt & Kit Distribution holding only Kyrylo. When she left, she had her son in one arm and a quilt, Baby Care Kit and Personal Care Kit tucked under the other. Thank you for showing Nadia and Kyrylo they are loved! ■



2 Thessalonians 2: 16-17

Even the local thrift store is in on the mission. “Recently they telephoned me to let me know they’d got in some baby clothes,” she says. ■

- In place of sleepers or gowns, pajama sets, tops and pants may be substituted.
- Sweaters may be knitted or crocheted or made from heavy double knits or flannel. No fleece. Preferred styles have buttons or ties down the front.
- Diapers can be made from flannel or even by recycling T-shirts.
- If knitting or crocheting receiving blankets, including one knitted/crocheted blanket and one flannel/cotton blanket will provide maximum versatility.
- You may include a knitted or crocheted baby cap along with a sweater or jacket that has no hood.
- Visit lwr.org/babycarekits or call **800.597.5972** for diaper, gown, and hooded cape patterns and a Diaper Tip Sheet.



Fabric Kits

Sewing is a valuable skill that can help men and women earn reliable income. Fabric Kits provide fabric and thread for vocational training programs teaching sewing, and for newly trained tailors to launch their sewing businesses.

Please review the General Assembly instructions on Page 1 before assembling Fabric Kits.

Include the following items in each Fabric Kit:

- ☐ Two pieces of cotton or cotton-blend fabric (no knits or 100% polyester). Each piece should match one of the sizes below. Pieces do not need to match:
 - ☐ 2 ¼ yards of 58"-62" wide fabric, or
 - ☐ 3 yards of 42"-45" wide fabric, or
 - ☐ 4 yards of 34"-37" wide fabric

- ☐ Two spools of matching or neutral-colored general purpose thread, totaling a minimum of 500 yards to a maximum of 800 yards. Combinations could include, but are not limited to:

- ☐ 2 spools of 400 yards
- ☐ 1 spool of 400 yards + 1 spool of 200 yards

Fabric should have no stains or holes. Pieces do not need to match in size, color or pattern. Fold thread and one piece of fabric inside second fabric piece and tie with yarn, sturdy string, ribbon, rubber bands, or a strip of fabric. Do not enclose the Fabric Kit or any of its contents in a plastic bag.

UPDATED SHIPPING NOTE:

LWR's approximate cost to handle and ship one Fabric Kit overseas is \$1.80. See Page 15 to learn how to support the LWR Quilt & Kit Shipping Fund.



Visit lwr.org/kitvideos to watch a video with tips and tricks for assembling Fabric Kits!

LWR FABRIC KITS provide tools to aspiring tailors to learn and practice sewing skills. Families in **BURKINA FASO** use the fabric and thread to mend their clothing and extend the life of their limited wardrobes. In **EL SALVADOR**, women are trained in making clothing for themselves and their children, giving them the personal satisfaction of caring for their families in this way, as is traditional in rural communities. And in **MALI**, vocational training centers teach young women and girls to sew as a means of earning an income, building a brighter future for themselves and their families.



NO FLEECE

Since 2020, LWR does not accept fleece-tied blankets, fleece as filler for quilts or fleece in any kits because it causes environmental concerns and may contaminate drinking water. We encourage you to take any fleece items to a local shelter, hospital or nursing home in your community.

NO BULK SOAP

Due to decreased demand by our partners, LWR is no longer accepting bulk soap. Many partners are sourcing soap within their country, which is good for the local economies. We know some of you have already collected soap, and we ask that you donate it to local organizations or shelters that can utilize it immediately. **Please note there will still be soap included in Personal Care Kits and Baby Care Kits**, but we have discontinued bulk soap collection.



Resident Diane Amati chooses thread for a Fabric Kit.



Resident Marilyn Hansen and Auxiliary member Linda Paquette work together.

▲ **DR. BARBARA MORTON** says she's always been civic-minded. So, when she retired and moved to Arlington Heights, Illinois, it made sense to volunteer with the Lutheran Home Auxiliary. (Plus, as Professor Emeritus and former Dean of the School of Education at Concordia University, Irvine, she's used to keeping busy!)

One of her first tasks was to clean out the storage closets in the common room where residents of Hearthstone, the community's assisted living facility, do arts and crafts projects. As she organized the space, she looked for ideas for new projects to engage the residents. To her surprise and delight, Barbara discovered 19 boxes of fabric.

She decided to create an opportunity for residents to love their neighbors by making Fabric Care Kits for Lutheran World Relief. This project involves selecting and sizing the fabric, adding two spools of thread, and folding and rolling everything into a little package, tied securely with ribbon or yarn.

On Saturdays, the room buzzes with volunteers and residents working together to assemble these colorful, useful bundles.

"It's a great opportunity to show others we are never too old to serve," Barbara says. ■



Residents and volunteers work together to assemble Fabric Kits.

**DO YOU KNOW ABOUT THE
LWR QUILTERS & KIT MAKERS
FACEBOOK GROUP?**

**Visit
[lwr.org/facebook](https://www.lwr.org/facebook)
to join today!**



GENERATIONS OF LWR QUILTERS

FRONT ROW: Rose Segaline, Sharon Golladay, Nina Golladay.
BACK ROW: Sarah Bradfield and Kathy Runion.

“The family that sews together, stays together.” **Nina Golladay’s** three daughters laugh when they hear this statement, but it rings true for them.

“We do all live within a mile of each other,” says Nina’s youngest daughter Kathy Runion. “We’re pretty close.”

Nina, who is 98, learned to sew as a young girl from her mother and grandmother. She started making quilts for Lutheran World Relief as a teenager. Nina is no longer able to keep up with her sewing ministry, but she set a good example. Now the next three generations of Golladay women help keep the quilting group at Mount Zion Lutheran Church in New Market, Virginia, going strong.

“Mom was always sewing,” recalls Nina’s middle daughter Sharon Golladay. “She made most of our clothes when we were little.” To get them involved, Nina helped her girls make doll clothes, then projects for their Home Economics classes. She also made hundreds of LWR Mission Quilts throughout her life — and set her quilting group up for success before she retired.

Kathy explains, “When mom stopped sewing, she started cutting squares. She still has boxes and boxes of squares that we draw from to put tops together. She’s also got a big stock of fabric for us. We don’t have to worry about running out.”

Nina’s daughters make up about half the members of their quilting group, which produces 50 to 100 quilts a year. A bonus member is bubbly 11-year-old Rose Segaline — Nina’s great-granddaughter. Rose and her mother Dorothy, the daughter of Nina’s oldest daughter Sarah Bradfield, help out when they can.

Rose says, “During my school summer break, I went with my mom to all the quilting meetings. That was fun. I knotted most of the quilts, and I helped pick out the fabrics for the backs.”

Thank you, Nina, for blessing the world through your sewing and your family! ■

Packing your Quilts and Kits

- Pack completed quilts and kits separately in boxes. Please pack like items together (pack School Kits separately from Personal Care Kits, etc.).
- Use strong cartons secured with packing tape, not to exceed 40 pounds.
- Do not use plastic or paper bags to pack donations.
- Do not mail partial kits.
- Do not mail to the LWR office at 700 Light Street.



Shipping or delivering Quilts and Kits



NEW: Barcode labels are no longer used. Please create your own label, or write on your boxes in **LARGE, BLOCK LETTERS**:

- Church name
- LWR
- Church address
- Type of item & quantity

For more packing information go to lwr.org/pack.

Bring your packed items to an Ingathering near you. Visit ingathering.lwr.org for details or send prepaid to or drop off at the LWR warehouse closest to you:

Lutheran World Relief
398 East Richmond Street
South St. Paul, MN 55075
651.457.9009

Lutheran World Relief
601 Main Street
PO Box 188
New Windsor, MD 21776
410.635.8795

The warehouses accept items year-round. If you are dropping items off, please call ahead for driving directions and hours of operation.

Use Thrivent Action Teams™ to make LWR Quilts & Kits!



Ruth Fikes, Jane Dreiske and Marge Ruffolo from Hope Lutheran Church in Palm Desert, CA

If you're a member of **Thrivent Financial**, you have access to an amazing benefit that can help boost your quilt and kit-making efforts — **Thrivent Action Teams™!**

HERE'S HOW IT WORKS:

- 1 Apply online, at the Thrivent Financial website, to lead a one-time fundraiser or service project that can be completed within 90 days.
- 2 If approved, Thrivent Financial will get you started with seed money, along with supplies to promote your event!



That's it! Check out for yourself how easy it is to form a **Thrivent Action Team™** to make **LWR Quilts & Kits** by visiting thrivent.com/actionteam or calling **800.847.4836** today.

NOTE: Thrivent grants may not be donated toward the Quilt & Kit Shipping Fund



Melissa Fritz



Rick Best

Meet your partners behind the scenes

For **MELISSA FRITZ**, every day at the New Windsor, Maryland, warehouse is like Christmas. It's her job to open boxes of your handmade quilts, inspect them and fold them to the appropriate size so they can be baled and shipped to their destinations.

Her favorite part of her job, which she has done for eight years, is opening each quilt and seeing all the pretty colors. "I almost hate to see them go," she says. "They're all so beautiful!" But she feels honored to be part of this ministry, and she knows she needs to send the quilts on their way, like little birds leaving the nest.

The other highlight of her job is greeting visitors. "People come from all over to drop off their quilts and kits," Melissa explains. "It's so nice to meet such wonderful people, to hear where they are from and receive their generous donations."

Melissa estimates that she inspects and folds between 1,200 and 1,600 quilts every day, five days a week. When her neatly folded piles reach 10 quilts high, her coworker **RICK BEST** takes them to the baling machine.

Rick has operated the baler in New Windsor for the past 10 years. His experience shows in the ease with which he creates the perfect, tidy bundles. Each bale contains 30-35

quilts depending on their thickness, and each weighs 105-115 lbs. Rick makes, weighs and processes between 36-48 bales every day, which amounts to a lot of heavy lifting — especially for a man in his mid-70s.

Rick says he keeps going strong for two reasons. First, he comes to work to see his family. Rick has no brothers or sisters and his parents have passed away, so he considers his coworkers to be his family. Second, he is proud to be an essential part of helping the quilts reach the people who need them.

"If I don't bale them, who else would?" he says, smiling. ■



Rick at the Baler



Scott Senseney packs LWR Baby Care Kits for shipment from the warehouse in New Windsor, MD.

LWR Quilt & Kit Shipping Fund

When you make LWR Quilts and Kits, you join countless other servants of Christ who reach out to people in need around the world through this ministry.

Together, we distributed an incredible \$18 million worth of quilts and kits in 2023! LWR currently spends about \$1.9 million annually to operate this program. We do our best to steward funds efficiently, but our behind-the-scenes operating costs have increased in recent years. (This is largely due to the significant rise in shipping costs since 2020.)

You can ensure LWR has the financial resources we need to distribute quilts and kits where they're needed most by donating to the Quilt & Kit Shipping Fund. This is also a great way for your congregation to support your quilt or kit ministry.

UPDATED

LWR's Approximate Cost to Deliver Quilts and Kits Overseas

One Quilt.....	\$2.80
One School Kit	\$2.85
One Personal Care Kit	\$1.50*
One Baby Care Kit.....	\$3.10
One Fabric Kit.....	\$1.80

* No longer includes cost of toothpaste

Ideas to Support the Quilt & Kit Shipping Fund:

Sponsor a Quilt or Kit: On your Quilt & Kit Dedication Sunday, attach an envelope to each completed quilt and kit and display them. Members can choose which quilt(s) and kit(s) they would like to “sponsor” by placing the corresponding Shipping Fund amount in the attached envelope.

Donate proceeds from a rummage or bake sale

Auction off one or two quilts and donate the proceeds from the auction

The Good Samaritan Quilt Plaza: Gifts to the Quilt & Kit Shipping Fund of \$500 or more may be commemorated with an engraved brick on the Good Samaritan Quilt Plaza at LWR headquarters in Baltimore. The engraved and colorful bricks make a pattern called “Many Trips Around the World” and represent the distribution of millions of quilts and comfort-giving kits to people who have lost everything to a natural disaster or war, or who struggle with endemic poverty.

**Mail monetary gifts to Lutheran World Relief,
PO Box 17061, Baltimore, MD 21297-1061**

Visit lwr.org/shippingfund or call 800.597.5972 for more information.



Homeless veteran Edward Lynch was on the brink of starting over when Hurricane Helene took everything. Your love comforted him.

An Ever-expanding Love

For 80 years, you have been the heart and soul of Lutheran World Relief. Your quilts and kits were one of our first ministries, and even now, they serve as a lifeline for so many of our neighbors in need. You are Christ's hands and feet in the world.

Because of the incredible generosity of our faithful quilters and kit makers, the LWR Quilt & Kit Ministry has expanded to reach neighbors in need in the United States.

This expansion of your love seemed to be divinely timed because we made our first deliveries almost immediately, comforting our neighbors affected by hurricanes Helene and Milton in the Southeastern U.S. **Ten tractor trailer trucks carried more than 136,750 Quilts and Kits in response to the devastation.**

We have a shared belief in an abundant God, a belief that has been magnified and realized through your actions again and again. We know that while this expansion holds so many wonderful new opportunities to honor God through service of his people, you will have lots of questions. We have answers.

The most common ones we've addressed at lwr.org/expansion. If yours isn't there, reach out anytime at quiltsandkits@lwr.org.

We at LWR are committed to creating a world free of poverty, injustice and human suffering, until your love reaches every neighbor. Thank you for bringing us closer to that world every day. ■

Quilt & Kit Blessing



After the work of collecting, sorting, creating, stitching and packing is complete, you are invited to bless the work your hands created and pray for those who will receive your outreach of love. This blessing can be adapted for use as a part of worship, a small group gathering, or in whatever setting makes sense for your group.

Resident of Tsyркuny, Kharkiv, Ukraine receiving an LWR quilt.



LEADER: God, you call us to love our neighbors as ourselves. Send forth your Spirit today as we call upon you to bless our work and make it holy. Help these quilts and kits, our offerings of hope, travel across the farthest distances to reach our most weary neighbors and surround them with your grace and peace.

CONGREGATION: JESUS, OPEN OUR HEARTS TO LOVE OUR NEIGHBORS.

L: God, we give you thanks for the pieces of fabric, thread, sewing machines, and the items collected for the kits. May their presence be a sign of your faithful promise, may these quilts wrap our neighbors in unending love, and may these kits offer dignity and healing.

C: JESUS, OPEN OUR HEARTS TO LOVE OUR NEIGHBORS.

L: God, we give thanks for all those who have taken part in creating these quilts and kits. May you guide us to greater empathy for our neighbors in crisis, for the mothers that struggle to feed their hungry children, for the fearful, the anxious, the isolated. May these quilts and kits provide comfort and relief to those who are downtrodden around the world.

C: JESUS, OPEN OUR HEARTS TO LOVE OUR NEIGHBORS.

L: God, be with those who will receive these gifts — neighbors we have never met, neighbors who are far away, neighbors who, like us, long for your grace and mercy. May the work crafted from our humble hands serve as a beacon of light and hope to those who are desolate and hopeless and fill them with the peace that is only found in you.

C: JESUS, OPEN OUR HEARTS TO LOVE OUR NEIGHBORS.

L: We thank you for this ministry of service, for the opportunity to comfort those in their darkest hours, to remind our neighbors in Christ of your loving presence. Bring us ever closer to your heart and our neighbors in need throughout the world. We pray all this in the name of Jesus, the one who is our hope.

C: AMEN.

SENDING

L: Emboldened by God's eternal and unconditional love for all people, let us go and do likewise, and share our blessings with neighbors near and far, in the name of the Father, the Son, and the Holy Spirit. **AMEN.**

There are lots of great ways to love your neighbors in need through Lutheran World Relief. Join us to fight poverty, injustice and human suffering — until your love reaches every neighbor.



LWR CONGREGATIONAL RESOURCES

Show your congregation how their love is reaching neighbors around the world. Resources at lwr.org/congregations are updated regularly.



THRIVENT ACTION TEAMS™ AND CHOICE DOLLARS®

Thrivent Financial helps guide members to live generously. Through volunteer programs like Action Teams, you can access funds to support your community's quilt and kit ministries. Choice Dollars® enable members to direct charitable funds to different organizations.

thrivent.com/actionteam
thrivent.com/choice

NOTE: Thrivent grants may not be donated toward the Quilt & Kit Shipping Fund



Gifts of Love

Gifts of Love supply everyday necessities that help women and men build lives of independence, self-sufficiency, sustainable income and real hope.

giftsoflove.org



STAY CONNECTED

We love sharing the stories of how your love is reaching every neighbor. Be sure to visit us on the web at lwr.org and also

[facebook.com/LuthWorldRelief](https://www.facebook.com/LuthWorldRelief)
[instagram.com/LuthWorldRelief](https://www.instagram.com/LuthWorldRelief)
lwr.org/blog
[youtube.com/LutheranWorldRelief](https://www.youtube.com/LutheranWorldRelief)



ORDER YOUR QUILT & KIT AFFINITY PIN

You make LWR Quilts and Kits. You blanket the world with God's love. To thank you for your faithful service, we'd like to send you this gift. Order your pin at lwr.org/qkpin.



LUTHERAN WORLD RELIEF

700 Light Street | Baltimore, MD 21230

800 597 5972 | LWR.ORG/QUILTS | LWR.ORG/KITS

Scripture quotations are from the New Revised Standard Version Bible, copyright © 1989 National Council of the Churches of Christ in the United States of America. Used by permission. All rights reserved.

QKMG-18.1K-1224



What will your love be doing 80 years from now?

For the past 80 years, your compassion has surrounded our most vulnerable neighbors, empowering them for brighter futures.

Will you join us for the next 80?

To learn more, or to share future gift intentions, contact me today or visit lwr.org/yourguide!

Plant a seed now that will flourish for generations to come...



LEE GRANT

Planned Giving Manager
410.230.2827
LGRANT@LWR.ORG



**LUTHERAN
WORLD RELIEF**